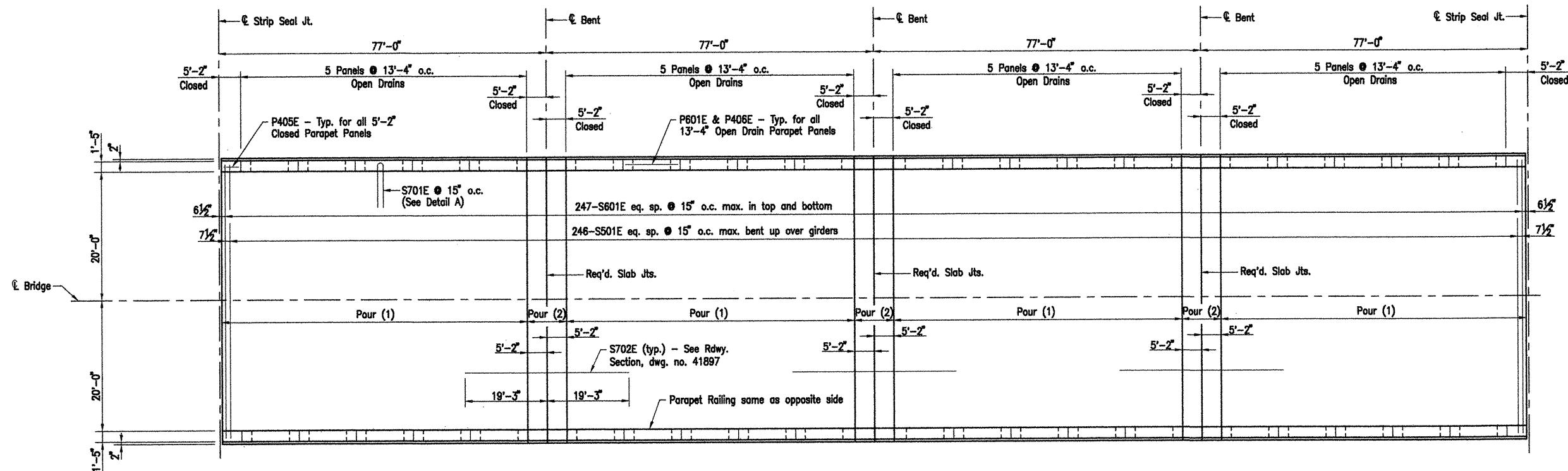


DATE REVISED	DATE FILMED	DATE REVISED	DATE FILMED	FED. ROAD NO.	STATE	FED. AID PROJ. NO.	SHEET NO.	TOTAL SHEETS
					ARK.			
						JOB NO. 110503	93	233
						07027	308' UNIT	41898



### PLAN

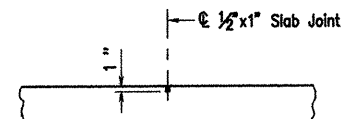
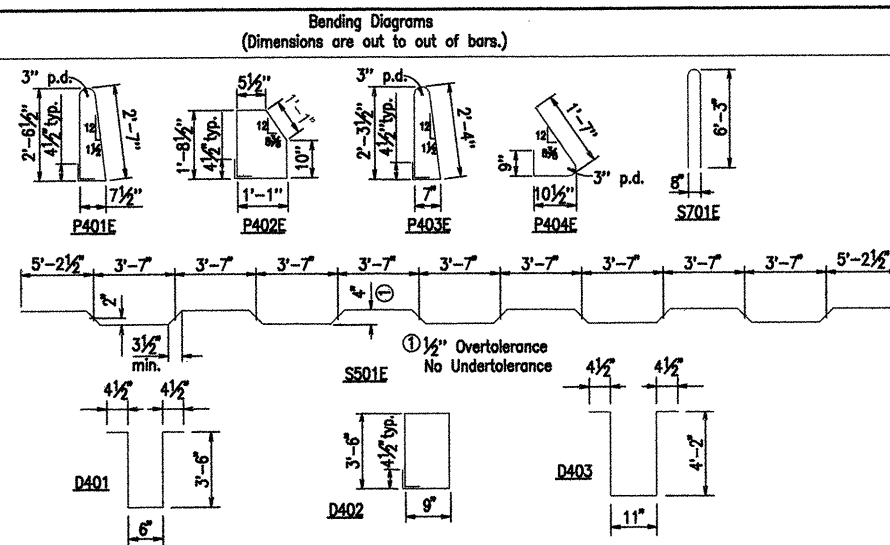
N.T.S.

Sta. 210+48 to Sta. 225+88 (Five Units Required)

NOTE: Pours with the same number may be placed simultaneously or separately. All Pours (1) must be placed before Pours (2) can be placed. 48 hours shall elapse between the end of a pour and the start of the next pour. 72 hours shall elapse between the end of a pour and the start of an adjacent pour. Any rolling pours made before the entire slab unit has been placed must be approved by the Bridge Engineer. Concrete in bridge superstructure shall be consolidated for the entire pour before any concrete has taken its initial set. This may require the use of a retarding agent. The Contractor must obtain approval from the Bridge Engineer for any deviations from the pouring sequence.

### BAR LIST PER 308' UNIT

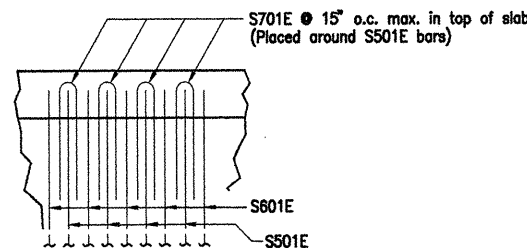
Mark	No. Req'd.	Length	Dia. Pin
S401E	904	39'-10"	Str.
S501E	246	43'-10 1/2"	3"
S601E	494	42'-10"	Str.
S701E	492	12'-10"	6"
S702E	162	38'-6"	Str.
P401E	592	6'-4"	2"
P402E	592	5'-8"	2"
P403E	320	5'-11"	2"
P404E	320	3'-1"	2"
P405E	96	4'-10"	Str.
P406E	160	13'-0"	Str.
P601E	200	13'-0"	Str.
D401	120	7'-11"	2"
D402	60	8'-10"	2"
D403	90	9'-8"	2"
D601	240	5'-3"	Str.
D602	96	7'-0"	Str.
D603	48	20'-6"	Str.



Use 1/2" X 1" Type 3, 4 or 6 Joint Sealer. See Subsection 501.02(h) and 501.05(j). Backer rod shall not be installed. Joint Sealer shall be measured and paid for as Class S(AE) Concrete-Bridge. Slab joints shall extend to the outside edge of the deck slab. Slab joints shall be installed before the parapet railing is poured. If slab joints are to be sawed, they shall be sawed as soon as the concrete has sufficiently set to allow sawing of the joint without damage to the slab. Slab joints shall be placed at all pouring sequence construction joints and required slab joint locations.

### SLAB JOINT DETAIL

N.T.S.



### DETAIL A

N.T.S.

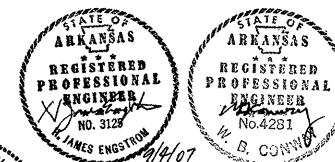
### ALTERNATE NO. 1 WHITE RIVER RELIEF BRIDGE

DETAILS OF 308'-0" CONT.  
PRESTRESSED CONCRETE GIRDER UNITS  
(SHEET 4 OF 7)

ROC ROE & WHITE RIVER RELIEF  
STRS. & APPRS. (CLARENDON) (F)  
MONROE COUNTY

ROUTE 79 SEC. 13  
ARKANSAS STATE HIGHWAY COMMISSION  
LITTLE ROCK, ARK.

Engstrom/Modjeski and Masters, Inc.



DRAWN BY: GPT DATE: Sept. 07 FILENAME: b11050312\_s04  
CHECKED BY: YO DATE: Nov. 01 SCALE: 1/16" = 1'-0"  
DESIGNED BY: GPT DATE: Nov. 01  
BRIDGE NO. 07027 DRAWING NO. 41898